

DC High-efficiency Backward Curved Centrifugal Fan

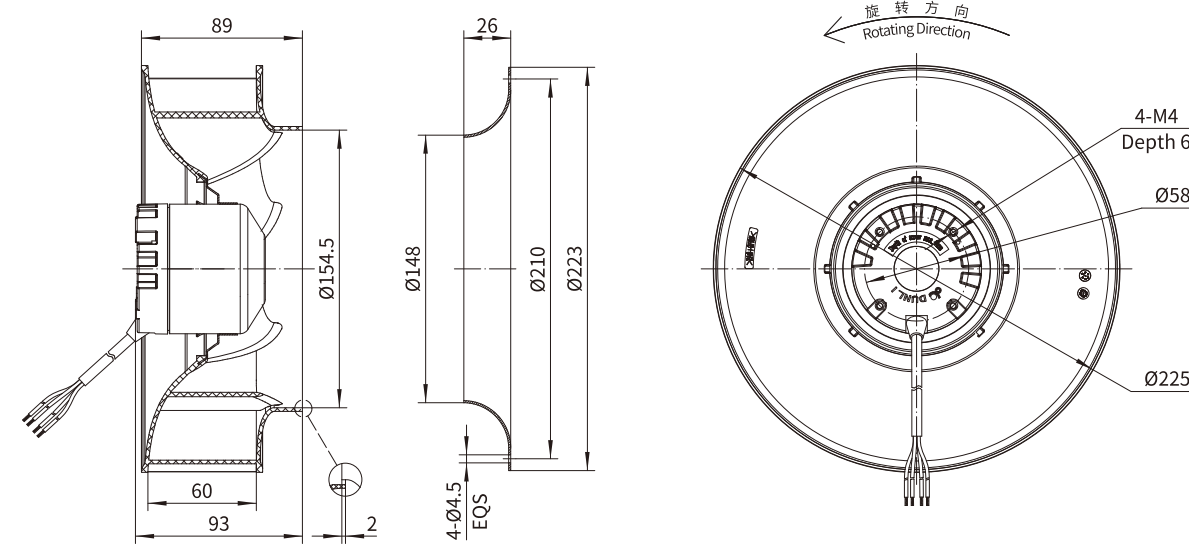
Erp2015
EXCEEDS THE NORM

Motorized Backward Curved Impeller (24V & 48V)

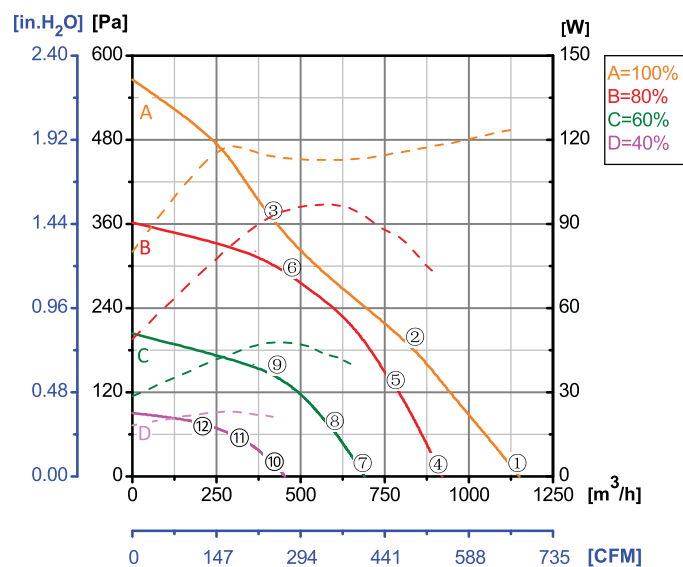


Φ 225

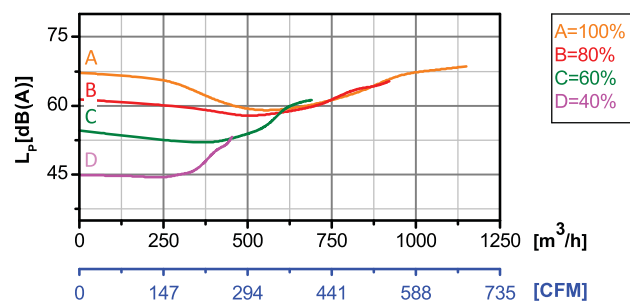
Rotor Material: Carbon steel
Impeller Material: Plastic
Ingress Protection: IP42
Insulation Class: F
Bearing Type: Maintenance free ball bearing



Performance Curves

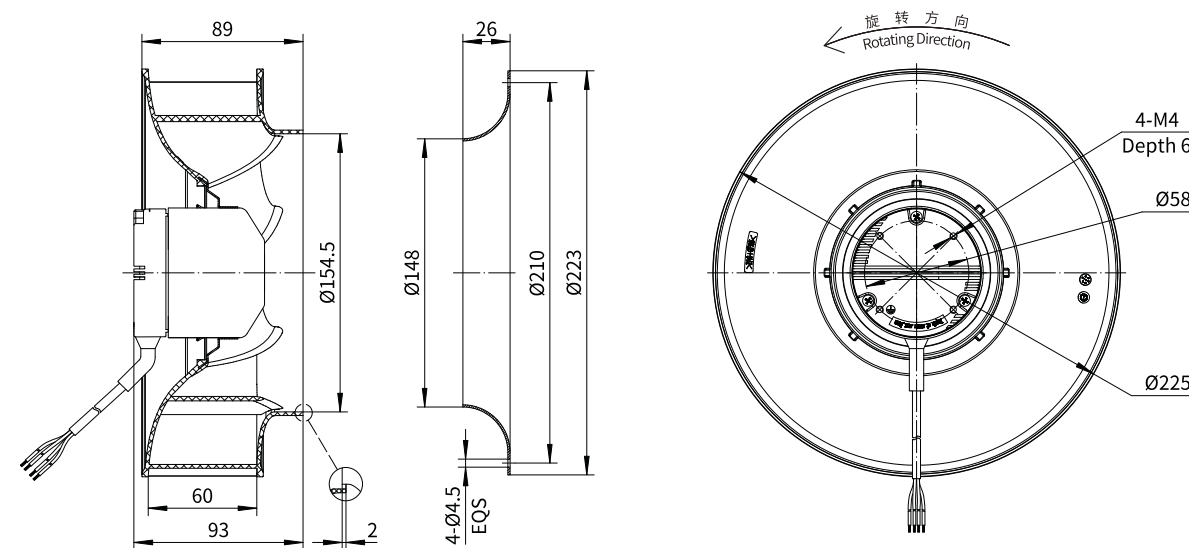


Test Point	Speed	Input Power
	rpm	W
1	2800	124
2	2509	117
3	2397	114
4	2235	71
5	2235	86
6	2234	96
7	1677	38
8	1678	43
9	1678	48
10	1119	20
11	1119	22
12	1119	23



Erp2015 Data:
Efficiency $\eta_{statA} = \% < 125W$
Efficiency grade $N_{actual} = \%, N_{target} = 62$
Test report NO.: L-20210302-005-109

Motorized Backward Curved Impeller (310V)



Model No.	Voltage	Frequency	Speed	Input Power	Current	Working Temp.	APProvals
	VAC	Hz	RPM	W	A	Min/Max (°C)	
DC72-B225-A01	24	/	2800	120	5.00	-20/+60	CE
DC72-B225-C01	48	/	2800	120	2.50	-20/+60	CCC,CE
DC72-B225-D10	310	/	2800	120	0.39	-20/+60	CCC,CE